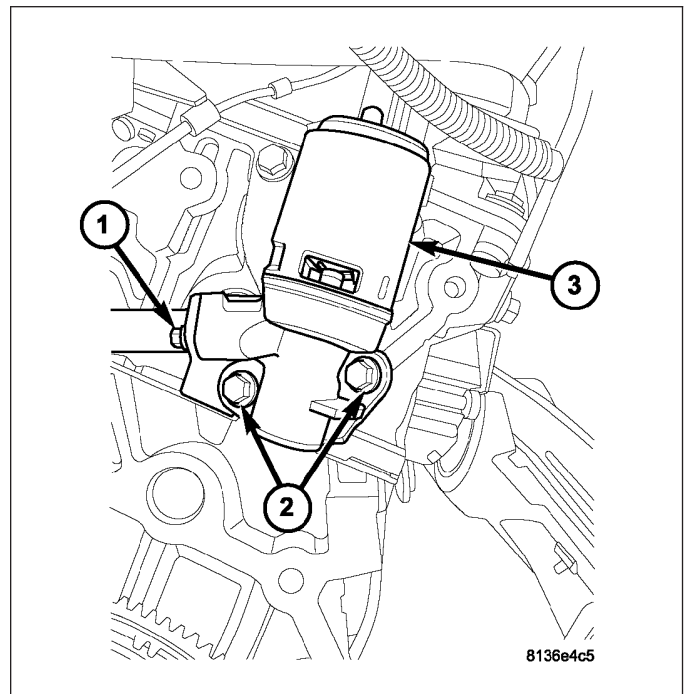
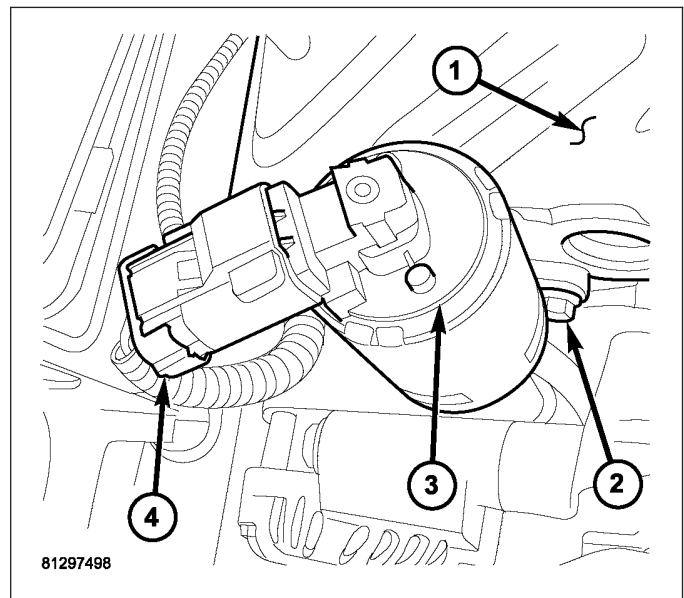


9. Remove tube bolts (1) to EGR valve (3).
10. Remove tube (1) from intake manifold.
11. When removing EGR upper tube assembly being careful not to drop the silicone rubber seals in the intake manifold. Clean gasket surfaces on the EGR valve. Note that any loose dirt can lodge between the pintle and the seat and cause valve leakage that will give a rough idle and depressed manifold vacuum.
12. Remove EGR valve mounting bolts (2).
13. Remove EGR valve from vehicle.
14. Clean mounting surface.

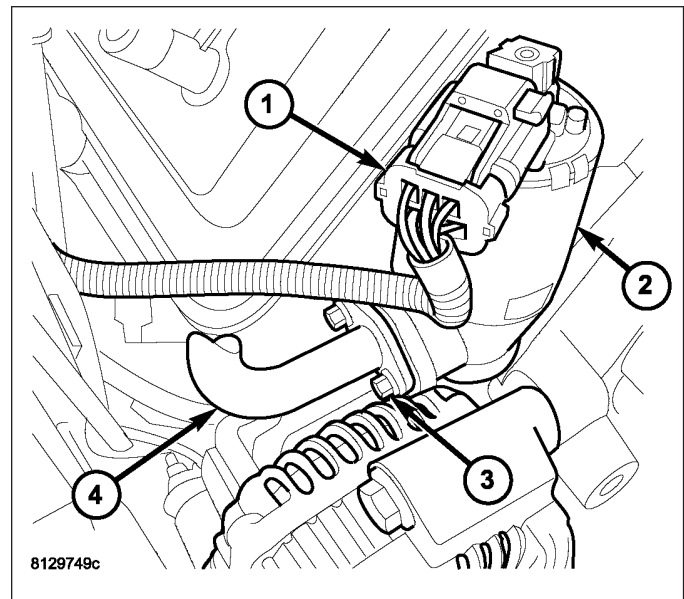


5.7L

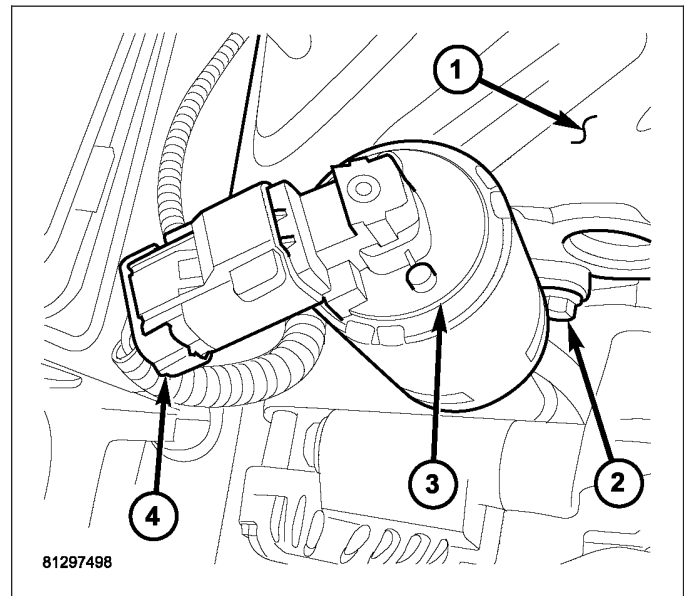
The electronic EGR valve and solenoid assembly (3) is attached to the front of the right cylinder head (1). An exhaust gas routing tube connects the EGR valve to the intake manifold.



1. Disconnect electrical connector (1) from EGR solenoid (2).
2. Remove two bolts (3) connecting EGR tube (4) to valve assembly.
3. Remove gasket located between EGR tube flange and EGR valve assembly.



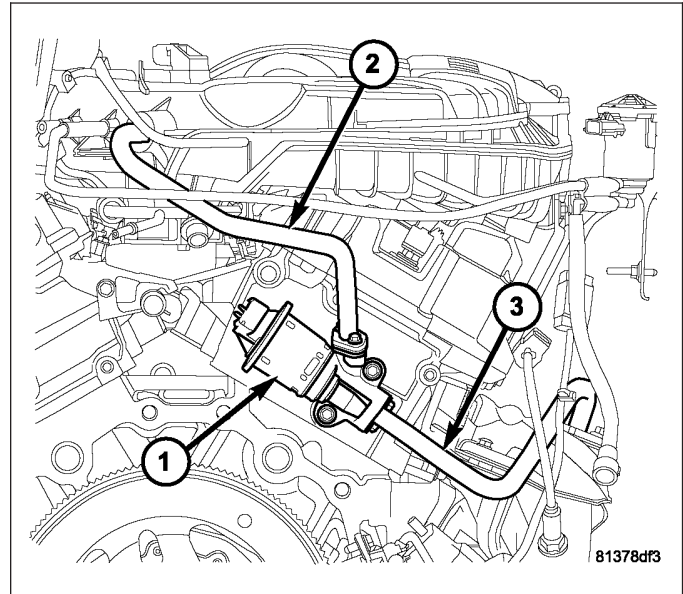
4. Remove two mounting bolts (2).
5. Separate valve assembly (3) from cylinder head (1).
6. Remove and discard metal gasket located between cylinder head and valve assembly.



INSTALLATION

2.7L

1. Clean mounting surface.



2. Install EGR valve.

3. Install the EGR valve mounting bolts (1).

4. Inspect rubber silicone seals on intake manifold end of EGR tube.

5. Install upper tube into the intake manifold, being careful that the silicone rubber seals are correctly installed and undamaged..

6. Install new gasket between the EGR valve and upper tube and install bolts (2).

7. Install the lower tube to exhaust manifold.

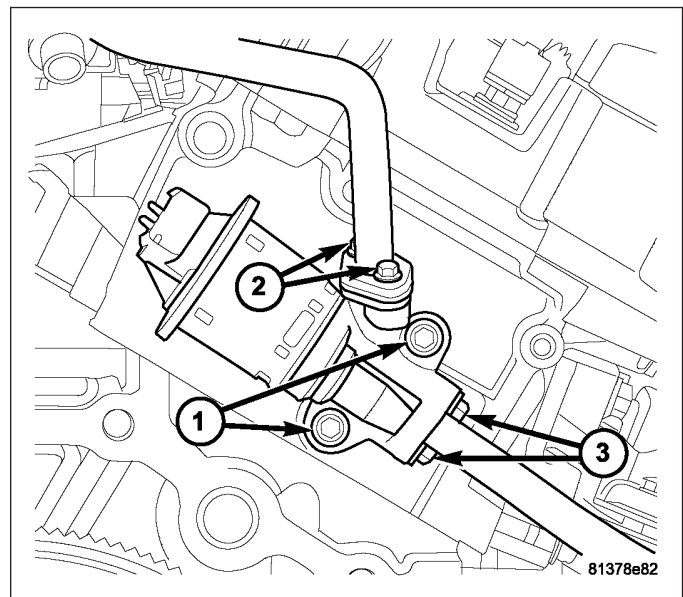
8. Install new gasket between the EGR valve and lower tube and install bolts (3).

9. Tighten the lower tube to EGR valve bolts (3) to 11 N·m (95 in. lbs.) torque.

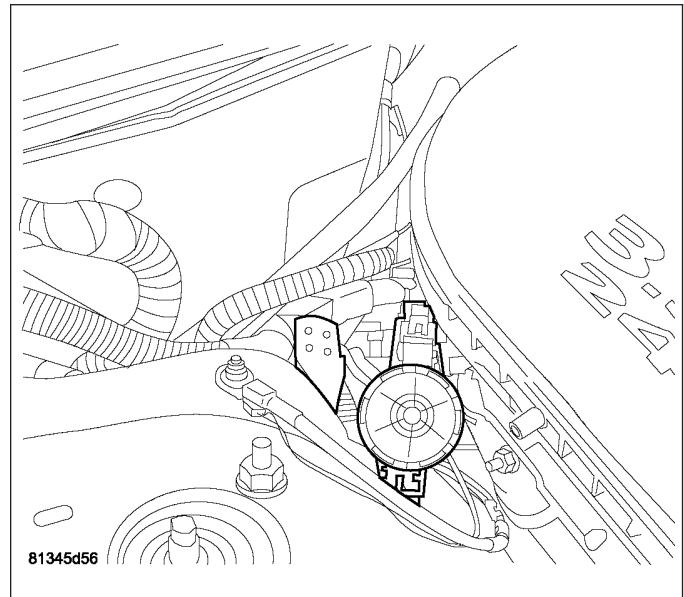
10. Tighten the lower tube to exhaust manifold bolts to 31 N·m (275 in. lbs.) torque.

11. Tighten the upper tube to EGR valve bolts (2) to 11 N·m (95 in. lbs.) torque.

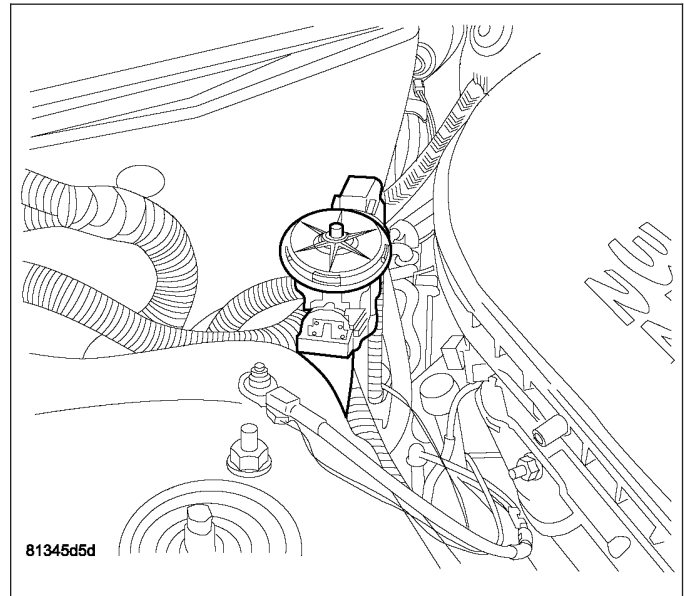
12. Tighten EGR valve to cylinder head bolts (1) to 31 N·m (275 in. lbs.) torque.



13. Connect the electrical connector to EGR valve and lock.
14. Relocate the purge solenoid.

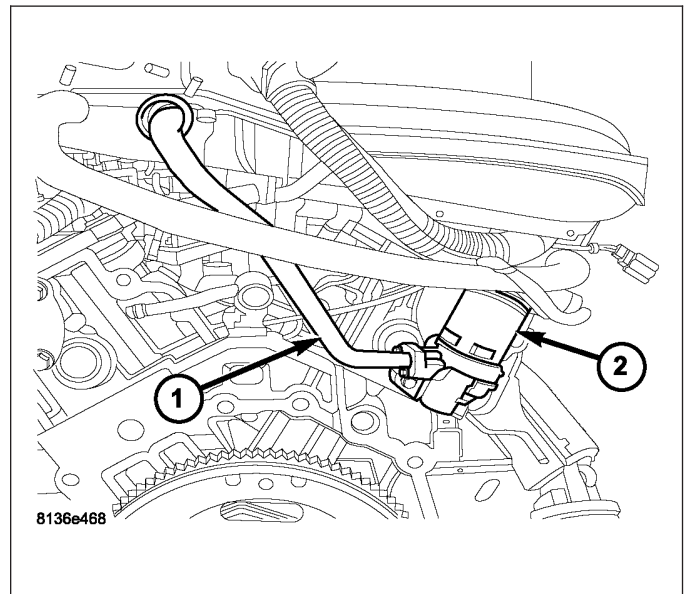


15. Install purge solenoid to bracket.
16. Connect negative battery cable.

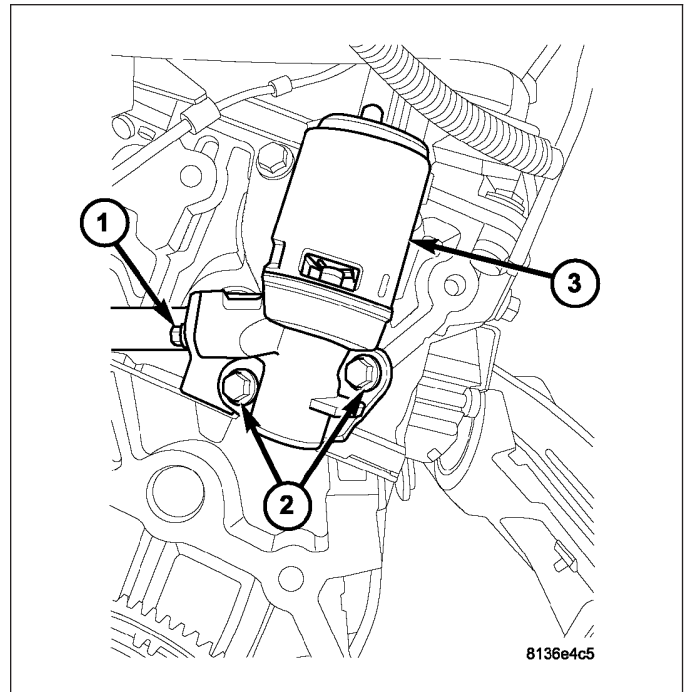


3.5L

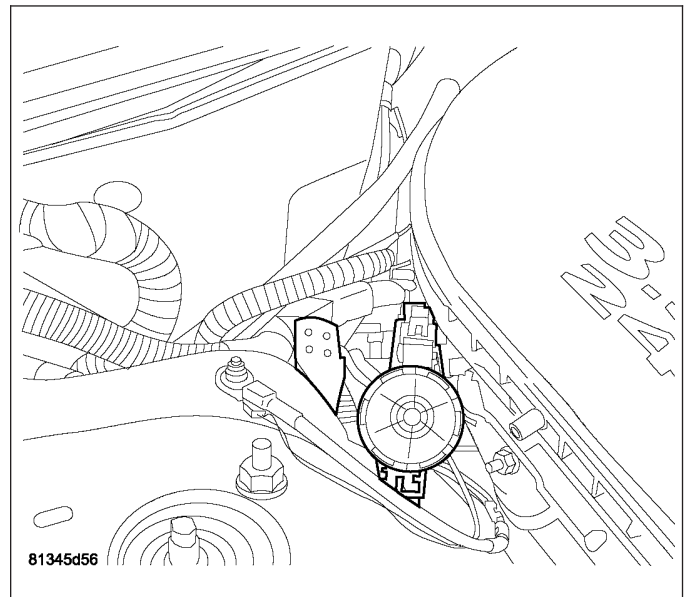
1. Clean mounting surface.
2. Inspect rubber silicone seals on intake manifold end of EGR tube.
3. Install tube into the intake manifold being careful that the silicone rubber seals are correctly installed and undamaged.



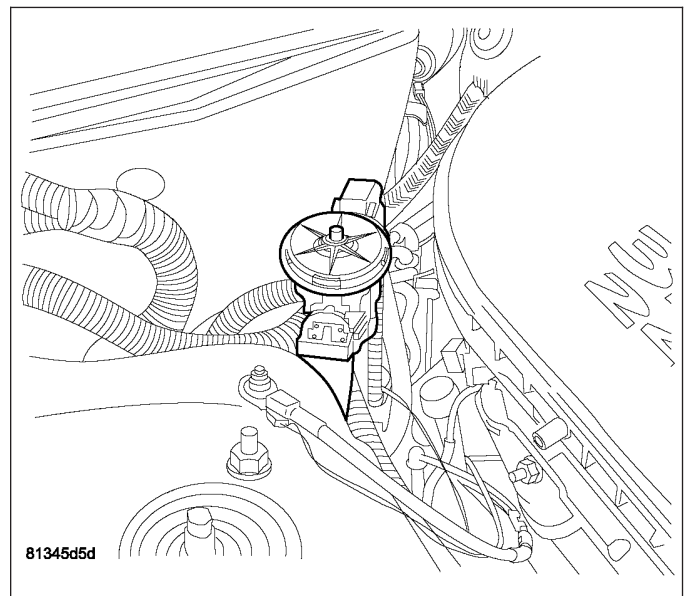
4. Install new gasket between the EGR valve (3) and tube and install bolts (1).
5. Tighten the EGR tube to EGR valve bolts (2) to 11 N·m (95 in. lbs.) torque.



6. Connect the electrical connector to EGR valve and lock.
7. Install upper intake manifold, (Refer to 9 - ENGINE/MANIFOLDS/INTAKE MANIFOLD - INSTALLATION).
8. Install the shock tower brace.
9. Install the wiper module, (Refer to 8 - ELECTRICAL/WIPERS/WASHERS/WIPER MODULE - INSTALLATION).
10. Relocate the purge solenoid.

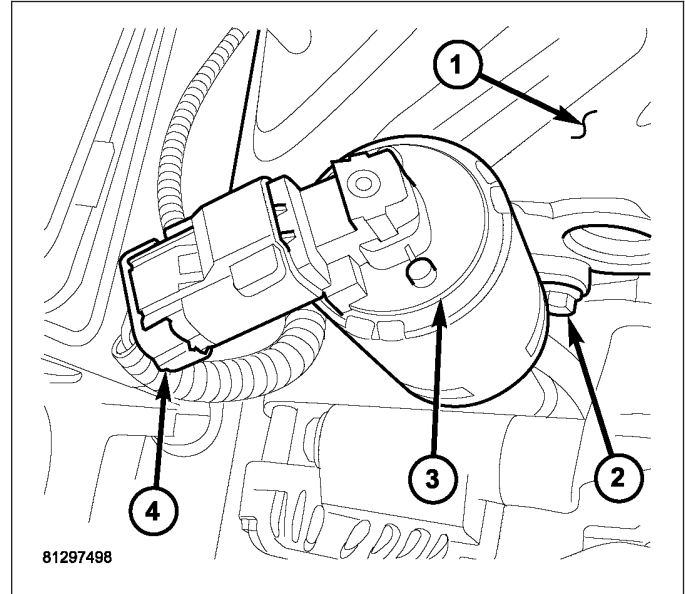


11. Install purge solenoid to bracket.
12. Connect negative battery cable.



5.7L

1. Position a new metal gasket between cylinder head (1) and valve assembly (3).
2. Install two mounting bolts (2) and tighten. Refer to Torque Specifications.



3. Clean EGR tube where it joins EGR valve.
4. Position new gasket between EGR tube flange and EGR valve assembly.
5. Install two bolts (3) connecting EGR tube (4) to valve assembly (2). Tighten bolts. Refer to Torque Specifications.
6. Connect electrical connector (1) to EGR solenoid (2).

